

Head Office:
 Dixon Kelley Estate Agents
 1 Penn Court
 Station Road, West Moors
 Dorset. BH22 0JJ

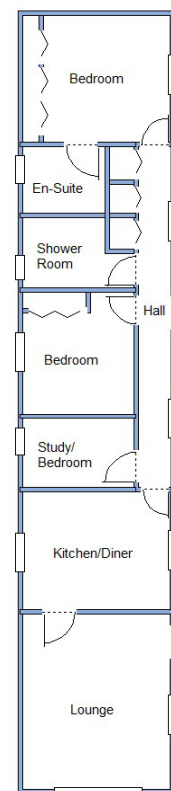
DORSET PARK HOMES

DRAFT

www.dorsetparkhomes.com

Telephone: 01202 877511

136 Pinehurst Park, West Moors, Dorset. BH22 0BS



This drawing has been prepared for diagrammatic purpose only. Not to scale

2-Bedroom Park Home - approx 60' x 12'

Accommodation & approximate room dimensions:

- Prestige 'Minute' 2012
- Entrance Hall: Cloaks cupboard. Cupboard housing combination gas boiler (untested). Linen cupboard.
- Lounge: approx 13'5" x 11'. Bay window. Feature fireplace
- Kitchen/Diner: approx 11'1" x 9'1". Range of floor and wall cupboards. Built in oven and ho with cooker hood over (untested). Integrated dishwasher & fridge/freezer (untested).
- Study/Bedroom 3: approx 8'6" x 5'4". Fitted desk unit.
- Bedroom 1: approx 9'8" x 9'2" Large recessed wardrobe.
- En-Suite Shower Room: Shower cubicle with thermostatic shower. Wash basin & WC. Chrome towel rail.
- Bedroom 2: approx 9'8" x 8'6". Built in wardrobes.
- Shower Room: Shower cubicle with thermostatic shower fitted (untested). Wash basin & WC. Chrome towel rail.
- PVCu Double-Glazing.
- Gas Central Heating (System untested)
- Delightful Garden laid to patio and lawn. Garden Shed.
- Parking on Plot for 2 Cars
- Age Restriction 45+ Pets considered
- Popular Residential Park close to Amenities

Beautifully Presented



Pitch Fee: approx £268.45 per month
Subject to Annual Review
Council Tax Band: 'A'

Tenure: 1983 Mobile Homes Act Agreement

Price Guide £200,000

VIEWING STRICTLY BY APPOINTMENT WITH THE VENDOR'S AGENT Dorset Park Homes 01202 877511

IMPORTANT NOTE: These particulars are believed to be correct but their accuracy is not guaranteed. They do not form part of any contract. Nothing in these particulars shall be deemed to be a statement that the property is in good structural condition or otherwise, nor that any of the services, appliances, equipment or facilities are in good working order or have been tested. Purchasers should satisfy themselves on such matters prior to purchase Ref.W04774

The recommended specialist in Park Home sales
 Proprietor: Simon Dixon

